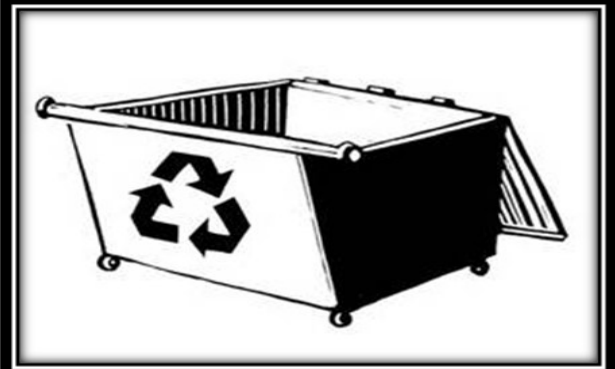


FULTON TOWNSHIP CLEAN-UP DAY
SATURDAY, JUNE 4, 2022
10AM-2PM
FULTON TOWNSHIP HALL
3425 W. CLEVELAND RD., PERRINTON, MI 48871
Phone: 989-236-5102; website: www.fultontwp.com

1. EACH HOUSEHOLD WILL BE LIMITED TO 10 TRASH BAGS AND ONE LARGE FURNITURE ITEM OR CLEAN APPLIANCE, (Refrigerators and Freezers must be tagged w/out Freon.)
2. FOR THOSE NEEDING ASSISTANCE, PLEASE CALL FULTON TOWNSHIP OFFICE @ 989-236-5102 TO SCHEDULE A PICK-UP.



FULTON TOWNSHIP RESERVES THE RIGHT TO REFUSE ANY TRASH THAT IS UNACCEPTABLE DUE TO THE NATURE OF ITS CONTENTS.

*****NO EARLY OR LATE TRASH DROPPED OFF WILL BE ACCEPTED.**

PROOF OF TOWNSHIP RESIDENCY OR PROPERTY OWNERSHIP IS REQUIRED TO FILL DUMPSTERS. (A DRIVER'S LICENSE, PROPERTY TAX RECEIPT OR VOTER'S REGISTRATION CARD WILL BE REQUIRED)

Call Twp. office for any recycle fees or pick up arrangements.

Trash Items that can be accepted include:

- **BUILDING MATERIALS COLLECTION** - Call to pre-arrange.
- **ELECTRONICS** - Collecting all types of electronics—Computers, TV's, cell phones, printers, lamp fixtures, toner/ink cartridges, batteries, etc. Computer hard drives are safely destroyed so no personal information is compromised. Contact office for fees.
- **TIRES**; First 6 small tires will be accepted at no cost to township residents, anything over 6 tires will incur a \$2.25 fee per tire, large tires will be charged the specified disposal fee/tire.
- **SCRAP METAL & CAR BATTERIES** will be collected to defray Clean-up Day costs.
***** We Can not accept: yard waste, chemicals, oil, wet paint, shingles, cement or any asbestos.**

"CONSUMERS ENERGY ELECTRIC CUSTOMERS GET A REBATE FOR RECYCLING!"

- \$50 rebate for working refrigerators and freezers
- \$15 rebate for working room air conditioners, compact refrigerators and dehumidifiers

For more information about the Appliance Recycling program, visit ConsumersEnergy.com/recycle or call 888-990-2246 to schedule.

Residential electric customers of Consumers Energy are eligible to receive a rebate for each operable appliance turned in. Refrigerators and freezers must be between 10 to 30 cubic feet, using inside measurements. A compact refrigerator measures less than 10 cubic feet." Rebate forms will be available the day of the event.